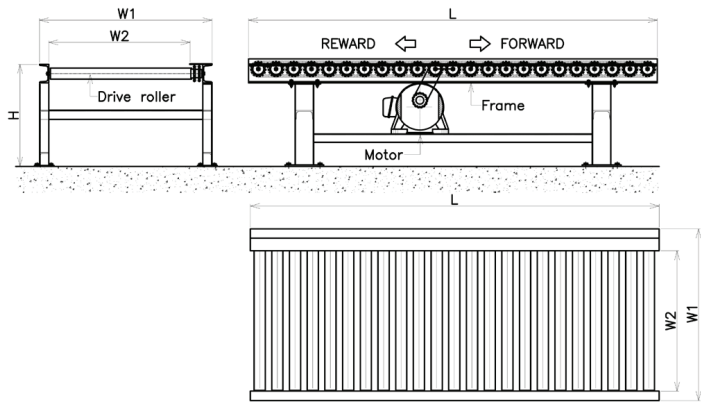




# Drive Roller Conveyor

## Standard Specification



## Specification

Item	Description
Width (W2)	500, 600, 700, 800, 900, 1000
Length (L)	1000, 2000, 3000, 4000, 5000, 6000
Frame	Material : Steel (Zinc Coated, Color), SUS
	Size : [-50x100x3Thk], [-100x50x5x7.5Thk]
Roller	Diameter (D2): 60.3x4Thk, 88.9x4Thk
	Bush (D1): Diameter 15, 20mm
Pitch	100, 150, 200
Color	Green, Cream, Blue, Bronze
Load Capacity	Follow Load Capacity Roller Table
Motor	0.4Kw, 0.75Kw

## Load Capacity Roller Table

Roller size (mm)	W3 (mm) / Load capacity (Kgs./Pcs.)					
	500	600	700	800	900	1000
60.30x4Thk	400	350	300	250	200	150
88.90x4Thk	650	600	550	500	450	400