



Battery Forklift

PLIC is the Authorised Sumitomo Forklift distributor in Thailand



Introduce of Electric forklift

In Europe and Japan, it became popular in usage of electric forklift by 60% share. But in Thailand, the share of electric forklift is still less than 25% now. PLIC has promoted electric forklift in Thailand for many years.

Electric forklift is good for environment such as no smoke, quiet operation. Other than these benefit, energy cost of operation is much lower than engine forklift (15% of fuel cost) Now a day, initial cost of electric forklift also decreased much.

Weakness of Electric forklift in Thailand

1. Some operators in Thailand are not familiar to Electric forklift operation.
2. It takes long time for charging battery, so it need spare battery for long operation.
3. Comparing to engine forklift, the power of climb is lower.

Electric Forklift

Electric forklift have many benefits, the table below shows benefits and disadvantages comparing with other forklift system.

Comparison Table of Engine & Electric Forklift		Engine Forklift			Battery Forklift	
		Diesel Engine	Gasoline Engine	LPG Engine	Counter Type	Reach Type
Operability	Speed	◎	◎	◎	○	△
	Turning radius	×	×	×	○	◎
	Body size	×	×	×	△	◎
	Ease of maintenance	×	×	×	○	○
	Operating in the rain	◎	◎	◎	△	×
	Fueled difficulty	◎	◎	○	△	△
Environment	Noise	×	△	△	◎	◎
	Smell	×	×	×	◎	◎
	Smoke, Gass	×	△	△	◎	◎
	CO2	×	×	×	◎	◎
Power	Lifting power	◎	◎	○	○	○
	Climing slope power	◎	◎	○	△	×
Cost	Initial cost	○	○	○	△	△
	Maintenance cost	△	×	×	○	○
	Energy cost	△	×	○	◎	◎

Note : The cost will be approximately 20% compared to the vehicle.

◎ Excellent ○ Good △ Plain × Bad



Battery Forklift (Counter Type)

SUMITOMO

Electric Counter Balanced-Type Battery Forklift Trucks

QuaPro-B

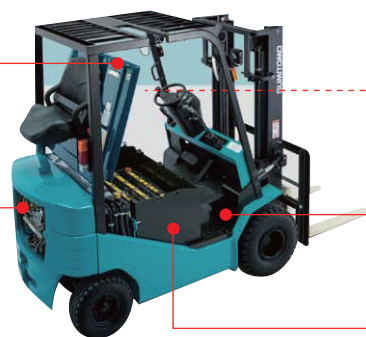
1.0 TON - 3.0 TON



Maintenance

The battery can be disconnected by the battery disconnect lever by just a single action.

Having the controllers laid out intensively in the counter weight. The controllers can be monitored at a glance. The devices were fully sealed for waterproof. An operator can operate the machine at ease even in a rainy day.



Opening and closing action of the battery hood required in daily maintenance work can be easily done thanks to the gas damper with the stay.

The floor plate is also attachable and detachable by a single action without a tool.

Major electric components were installed in the guard case thanks to the drop battery. An operator can confirm the pump motor by just opening the hood.

Battery		●:Standard ○:Option						
		1.0ton	1.35ton	1.5ton	1.75ton	2.0ton	2.5ton	3.0ton
Battery capacity		8FB10PXII	8FB14PXII	8FB15PXII	8FB18PXII	8FB20PXII	8FB25PXII	8FB30PZXII
320Ah / 5h (48V)		●	●					
390Ah / 5h (48V)		○	○	●	●			
440Ah / 5h (48V)		○	○	○	○	●		
470Ah / 5h (48V)		○	○	○	○			
525Ah / 5h (48V)		○	○	○	○			
545Ah / 5h (48V)								
565Ah / 5h (48V)						○	●	
700Ah / 5h (48V)						○	○	
725Ah / 5h (48V)								
440Ah / 5h (72V)								●
525Ah / 5h (72V)								○
600Ah / 5h (72V)								○

Attachments				
	Function	8FB10-18PXII	8FB20-25PXII	8FB30PZXII
Side shift	Only the fork moves left and right without vehicle's move	●	●	●
Revolving fork	For releasing and hauling the load in liquid and in bulk.	●	●	●
Paper roll cramp	Capable to haul all kinds of paper rolls and to place the load at will either in lengthwise or sideways wise.	●	●	●
Bale cramp	Without a palette, by nipping, capable to transport packing materials such as raw cotton and used papers.	●	●	●
Fork cramp	Capable to concurrently work on both nipping and palette works.	●	●	●
Drum cramp	Transporting a drum can by nipping it from both sides.	●	●	●
Revolving bale cramp	Added revolving mechanism to the bale cramp.	●	●	●
Revolving fork cramp	Added revolving mechanism to the fork cramp.	●	●	●
Revolving drum cramp	Added revolving mechanism to the drum cramp.	●	●	●
Load stabilizer	Safely transport the load likely to shift by holding them down.	●	●	●
Manual fork positioner	Capable to freely control the spacing of the fork from driver's seat. (manual)	●	●	●
Hydraulic fork positioner	Capable to freely control the spacing of the fork from driver's seat. (hydraulic)	●	●	●
Crane arm	Even in tight space, capable to do crane work.	●	●	●
Simple hook	Without exchanging the exclusive attachment, capable to do crane work.	●	●	●
Reach fork	Capable to easily work by the reaching mechanism of pantograph system on the load handling in parallel 2 lanes and the load placed all the way back of the rack.	—	●	●

Besides the one above mentioned, many other kinds of attachments are ready for you.
Please consult with the marketing division in charge for the detail.



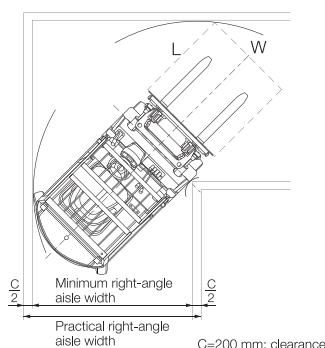
Forklift

Battery Forklift (Counter Type)

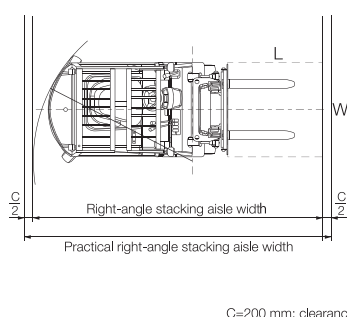
Intersecting (IA) and Right-angle Stacking (SA) Aisle Widths (unit: mm*)													
Model	Pallet length	1,000		1,100		1,200		1,300		1,400		1,500	
	Pallet width	IA	SA	IA	SA	IA	SA	IA	SA	IA	SA	IA	SA
8FB10PXII	800	1,835	3,200	1,835	3,300	1,880	3,400	1,970	3,500	2,055	3,600	2,150	3,700
	1,000	1,835	3,200	1,835	3,300	1,930	3,400	2,015	3,500	2,105	3,600	2,190	3,700
	1,100	1,850	3,200	1,890	3,300	1,975	3,400	2,055	3,500	2,145	3,600	2,230	3,700
	1,200	1,900	3,200	1,970	3,300	2,050	3,400	2,135	3,500	2,220	3,600	2,305	3,700
	1,300	1,970	3,205	2,050	3,305	2,130	3,405	2,210	3,505	2,295	3,605	2,380	3,705
	1,400	2,050	3,215	2,130	3,310	2,210	3,410	2,290	3,510	2,370	3,610	2,455	3,710
	1,500	2,135	3,220	2,210	3,320	2,290	3,420	2,370	3,515	2,450	3,615	2,535	3,715
8FB14PXII	800	1,835	3,200	1,835	3,300	1,880	3,400	1,970	3,500	2,055	3,600	2,150	3,700
	1,000	1,835	3,200	1,845	3,300	1,930	3,400	2,015	3,500	2,105	3,600	2,190	3,700
	1,100	1,850	3,200	1,890	3,300	1,975	3,400	2,055	3,500	2,145	3,600	2,230	3,700
	1,200	1,900	3,200	1,970	3,300	2,050	3,400	2,135	3,500	2,220	3,600	2,305	3,700
	1,300	1,970	3,205	2,050	3,305	2,130	3,405	2,210	3,505	2,295	3,605	2,380	3,705
	1,400	2,050	3,215	2,130	3,310	2,210	3,410	2,290	3,510	2,370	3,610	2,455	3,710
	1,500	2,135	3,220	2,210	3,320	2,290	3,420	2,370	3,515	2,450	3,615	2,535	3,715
8FB15PXII	800	1,845	3,205	1,845	3,305	1,880	3,405	1,970	3,505	2,055	3,605	2,150	3,705
	1,000	1,845	3,205	1,845	3,305	1,930	3,405	2,015	3,505	2,105	3,605	2,190	3,705
	1,100	1,860	3,205	1,890	3,305	1,975	3,405	2,055	3,505	2,145	3,605	2,230	3,705
	1,200	1,910	3,210	1,970	3,310	2,050	3,410	2,135	3,510	2,220	3,610	2,305	3,710
	1,300	1,970	3,215	2,050	3,315	2,130	3,410	2,210	3,510	2,295	3,610	2,380	3,710
	1,400	2,050	3,220	2,130	3,320	2,210	3,420	2,290	3,515	2,370	3,615	2,455	3,715
	1,500	2,135	3,230	2,210	3,325	2,290	3,425	2,370	3,525	2,450	3,625	2,535	3,720
8FB18PXII	800	1,940	3,235	1,940	3,335	1,940	3,435	2,005	3,535	2,090	3,635	2,185	3,735
	1,000	1,940	3,235	1,940	3,335	1,965	3,435	2,050	3,535	2,140	3,635	2,225	3,735
	1,100	1,940	3,235	1,940	3,335	1,995	3,435	2,075	3,535	2,165	3,635	2,250	3,735
	1,200	1,970	3,240	1,970	3,340	2,050	3,440	2,135	3,540	2,220	3,640	2,305	3,740
	1,300	2,020	3,245	2,050	3,345	2,130	3,440	2,210	3,540	2,295	3,640	2,380	3,740
	1,400	2,070	3,250	2,130	3,350	2,210	3,450	2,290	3,545	2,370	3,645	2,455	3,745
	1,500	2,135	3,260	2,210	3,355	2,290	3,455	2,370	3,555	2,450	3,655	2,535	3,750
8FB20PXII	800	2,085	3,395	2,085	3,495	2,085	3,595	2,085	3,695	2,170	3,795	2,260	3,895
	1,000	2,085	3,395	2,085	3,495	2,085	3,595	2,130	3,695	2,215	3,795	2,305	3,895
	1,100	2,085	3,395	2,085	3,495	2,085	3,595	2,155	3,695	2,240	3,795	2,330	3,895
	1,200	2,085	3,395	2,085	3,495	2,095	3,595	2,180	3,695	2,265	3,795	2,350	3,895
	1,300	2,125	3,400	2,125	3,500	2,165	3,600	2,245	3,700	2,330	3,800	2,415	3,900
	1,400	2,175	3,405	2,175	3,505	2,245	3,605	2,325	3,705	2,410	3,805	2,495	3,900
	1,500	2,225	3,415	2,245	3,510	2,325	3,610	2,405	3,710	2,485	3,810	2,570	3,910
8FB25PXII	800	2,115	3,420	2,115	3,520	2,115	3,620	2,115	3,720	2,170	3,820	2,260	3,920
	1,000	2,115	3,420	2,115	3,520	2,115	3,620	2,130	3,720	2,215	3,820	2,305	3,920
	1,100	2,115	3,420	2,115	3,520	2,115	3,620	2,155	3,720	2,240	3,820	2,330	3,920
	1,200	2,115	3,425	2,115	3,525	2,115	3,625	2,180	3,725	2,265	3,825	2,350	3,925
	1,300	2,155	3,430	2,155	3,530	2,165	3,630	2,245	3,725	2,330	3,825	2,415	3,925
	1,400	2,205	3,435	2,205	3,535	2,245	3,630	2,325	3,730	2,410	3,830	2,495	3,930
	1,500	2,255	3,440	2,255	3,540	2,325	3,640	2,405	3,740	2,485	3,835	2,570	3,935
8FB30PZXII	800	2,265	3,635	2,265	3,735	2,265	3,835	2,265	3,935	2,265	4,035	2,265	4,135
	1,000	2,265	3,635	2,265	3,735	2,265	3,835	2,265	3,935	2,265	4,035	2,310	4,135
	1,100	2,265	3,635	2,265	3,735	2,265	3,835	2,265	3,935	2,265	4,035	2,330	4,135
	1,200	2,265	3,635	2,265	3,735	2,265	3,835	2,265	3,935	2,270	4,035	2,355	4,135
	1,300	2,305	3,635	2,305	3,735	2,305	3,835	2,305	3,935	2,335	4,035	2,420	4,135
	1,400	2,355	3,640	2,355	3,740	2,355	3,840	2,355	3,940	2,415	4,040	2,500	4,140
	1,500	2,405	3,645	2,405	3,745	2,405	3,845	2,410	3,945	2,490	4,045	2,575	4,145
	1,800	2,555	3,675	2,555	3,770	2,575	3,870	2,650	3,965	2,730	4,065	2,810	4,165

*Figure does not include the turning capacity of 200 mm in the practical right-angle stacking aisle width.

Minimum right-angle aisle width



Right-angle stacking aisle width





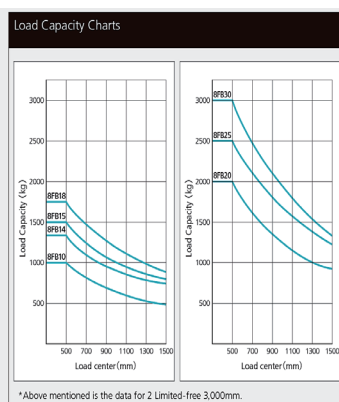
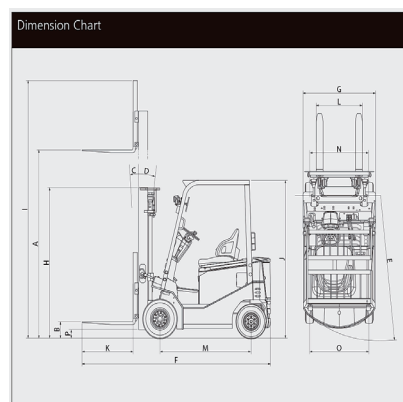
Battery Forklift (Counter Type)

Specifications			Model								
Item/Symbol				1.0 ton	1.35 ton	1.5 ton	1.75 ton		2.0 ton	2.5 ton	3.0 ton
				8FB10PXII	8FB14PXII	8FB15PXII	8FB18PXII		8FB20PXII	8FB25PXII	8FB30PZKII
Performance	Maximum load capacity	kg		1,000	1,350	1,500	1,750		2,000	2,500	3,000
	Standard load center	mm		500	500	500	500		500	500	500
	Standard lifting height	mm	A	3,000	3,000	3,000	3,000		3,000	3,000	3,000
	Free lift	mm	B	145		145	145		155	155	160
	Tilting angle (up/down)	deg	C/D	6°/10°	6°/10°	6°/10°	6°/10°		6°/10°	6°/10°	6°/10°
	Travel speed	km/h	(Laden)	14.0	13.5	13.5	13.5		13.0	12.5	14.0
		km/h	(Unladen)	15.0	15.0	15.0	15.0		15.0	15.0	16.5
	Lifting speed	mm/s	(Laden)	490	460	450	420		355	335	310
Dimensions		mm/s	(Unladen)	635	635	635	635		600	600	550
	Minimum turning radius (outer)	mm	E	1,790	1,790	1,795	1,825		1,930	1,960	2,145
	Overall length (with fork)	mm	F	2,845	2,995	3,000	3,035		3,200	3,395	3,560
	Overall width	mm	G	1,100	1,100	1,100	1,130		1,265	1,265	1,265
	Mast lowered height	mm	H	1,995	1,995	1,995	1,995		1,995	1,995	2,060
	Max mast height w/ backrest	mm	I	3,955	3,955	3,955	3,955		3,970	3,970	4,125
	Head guard height	mm	J	2,090	2,090	2,090	2,090		2,090	2,090	2,090
	Fork length	mm	K	770	920	920	920		920	1,070	1,070
Tires	Fork spread width (maximum)	mm	L	920	920	920	920		1,020	1,020	1,060
	Fork spread width (minimum)	mm	L	200	200	200	200		250	250	250
	Wheel base	mm	M	1,380	1,380	1,380	1,380		1,485	1,485	1,625
	Tread (front/rear)	mm	N/O	910/905	910/905	910/905	950/905		1,040/1,015	1,040/1,015	1,040/1,015
	Minimum ground clearance (underneath the mast)	mm	P	110	110	110	110		120	120	140
	Vehicle weight	kg		2,775	2,780	2,945	3,240		3,695	4,195	4,735
	Front wheel			6.00-9-10PR(I)	6.00-9-10PR(I)	6.00-9-10PR(I)	21×8-9-10PR(I)		23×9-10-16PR(I)	23×9-10-16PR(I)	23×9-10-20PR(I)
	Rear wheel			5.00-8-8PR(I)	5.00-8-8PR(I)	5.00-8-8PR(I)	5.00-8-10PR(I)		18×7-8-10PR(I)	18×7-8-10PR(I)	18×7-8-14PR(I)
Electrical components	Travel	Control type		FET inverter	FET inverter	FET inverter	FET inverter		FET inverter	FET inverter	FET inverter
		Output	kW	6.5	6.5	6.5	6.5		8.7	8.7	11.7
	Hoist	Control type		FET inverter	FET inverter	FET inverter	FET inverter		FET inverter	FET inverter	FET inverter
		Output	kW	9.6	9.6	9.6	9.6		9.6	9.6	16.2
	Steering	Control type		IGBT chopper	IGBT chopper	IGBT chopper	IGBT chopper		IGBT chopper	IGBT chopper	IGBT chopper
		Output	kW	1.2	1.2	1.2	1.2		1.2	1.2	1.2
	Rechargeable battery	Voltage×Capacity	V/Ah	48/320	48/320	48/390	48/390		48/440	48/565	72/440
	Overall width	mm		—	—	—	—		1,455	1,455	1,455
*Dual Tires	Tread (front)	mm		—	—	—	—		1,105	1,105	1,105
	Vehicle weight	kg		—	—	—	—		3,740	4,240	4,780
	Front wheel			—	—	—	—		5.50-15-8PR(I)	5.50-15-8PR(I)	5.50-15-8PR(I)

Mast		● Standard ○ Option								
		1.0-1.75 ton			2.0-2.5 ton			3.0 ton		
		8FB10-18PXII			8FB20-25PXII			8FB30PZKII		
		2Limited-free	2Full-free	3Full-free	2Limited-free	2Full-free	3Full-free	2Limited-free	2Full-free	3Full-free
Max. lifting height* (mast designation)	2,900					○			○	
	3,000	●	○		●			●	○	
	3,300	○	○		○	○		○	○	
	3,500	○	○		○	○		○	○	
	3,700	○	○		○			○		
	3,800					○			○	
	4,000	○	○	○	○	○	○	○	○	○
	4,300	○		○	○		○	○		○
	4,500	○	○	○	○	○	○	○	○	○
	4,600									○
	4,700	○		○	○		○			○
	5,000	○		○	○		○	○		○
	5,300		○				○		○	
	5,500						○		○	
	5,600						○			○
	5,700									○
	6,000			○		○				○

* The lifting height is for loaded circumstances.

The mast can lift a load over 6m high. Please consult with the marketing division in charge for the detail.



*Above mentioned is the data for 2 Limited-free 3,000mm.

Main Accessories		Standard specs / accessories	Optional specs / accessories	Posted page
Comfortability	travel / Hoist related	Travel / Hoist AC motor	Left hand shift lever	
		Power steering		
		Soft landing		
	Cockpit	Small diameter steering wheel	Suspension seat	
Safety		Manifest clip	Seat heater	
			Front windshield	
			Canvas cabin	
			Acrylic cover	P8
Workability	Display *	LCD display	Full function display (Full-dot LCD)	P8
	travel / Hoist related	Travel and load handling interlock	Forward/back movement chimer	
		Neutral start	Forward/back melodic chimer	
		Travel and hoist speed limiter	Horn switch	
Cost Efficiency			Parking brake warning	
			Solid tires	P6,10
			Long fork	
			High backrest	
Environmental specs.	others	Back buzzer	Large size rear view mirror	
			Large size room mirror	
	Lamp related	Headlights	LED headlight (round type/square type/automatic illuminance control type)	P4,10
		Turning indicators	LED rear combination light	P10
			LED rotating light	P10
			LED work / room light	
			Carriage light	P4,10
			Safety laser	P4
	travel / Hoist related	Accelerator pedal/driving power control	Simple load weight scale	P4
		High-visibility wide mast		
	others		Battery hanger	
			Tool / grease gun / thermometer / gravimeter	
	Battery	Auto power off	Spare battery	
		Neutral brake shift lever regeneration		
		BDI interrupt (stop hoisting at over discharging)		
			General freezer refrigerator spec. model (Up to -35℃ / -45℃)	
			Anti-rust spec. model	
			Anti-dust spec. model	



Battery Forklift (Counter Type)

SUMITOMO

Electric Counter Balanced-Type Battery Forklift Trucks
3.5 TON - 4.0 TON



Outstanding working performance that beats the pack!

Top class speed

High-performance motors installed for travel and goods handling, to boost operation efficiency and shift large, heavy loads smoothly and speedily.

Compact body

Unbelievably compact body for a heavy-duty forklift. Nifty maneuvering round narrow warehouse aisles.

Travel speed
18.0 km/h (unladen)

Lifting speed
480 mm/s (unladen)



Advantages of AC drive system

Motor

- 1. Simple, robust structure**
Stator coil and rotor are only major components
Bearing only part that may require replacement.
- 2. Maximum torque is limited, reducing risk of overheating**
Thermo sensor reports stator coil temperature to control system, to protect motor from overheating.
Transistors in the controller are similarly protected.
- 3. Large torque at high speed**
Large torque even in mid- to high-speed range allows good acceleration.
- 4. Large regenerative torque**
Large regenerative torque provides good maneuverability.

Controller

- 1. No F/R contactor or regenerative contactor required**
Crisp response, reduced maintenance, and less noise.
- 2. Regenerative braking throughout speed range**
Regenerative braking from zero to top speed improves driveability and recovers more energy.
- 3. Excellent control across speed range**
Consistently high controllability from low to high speed.

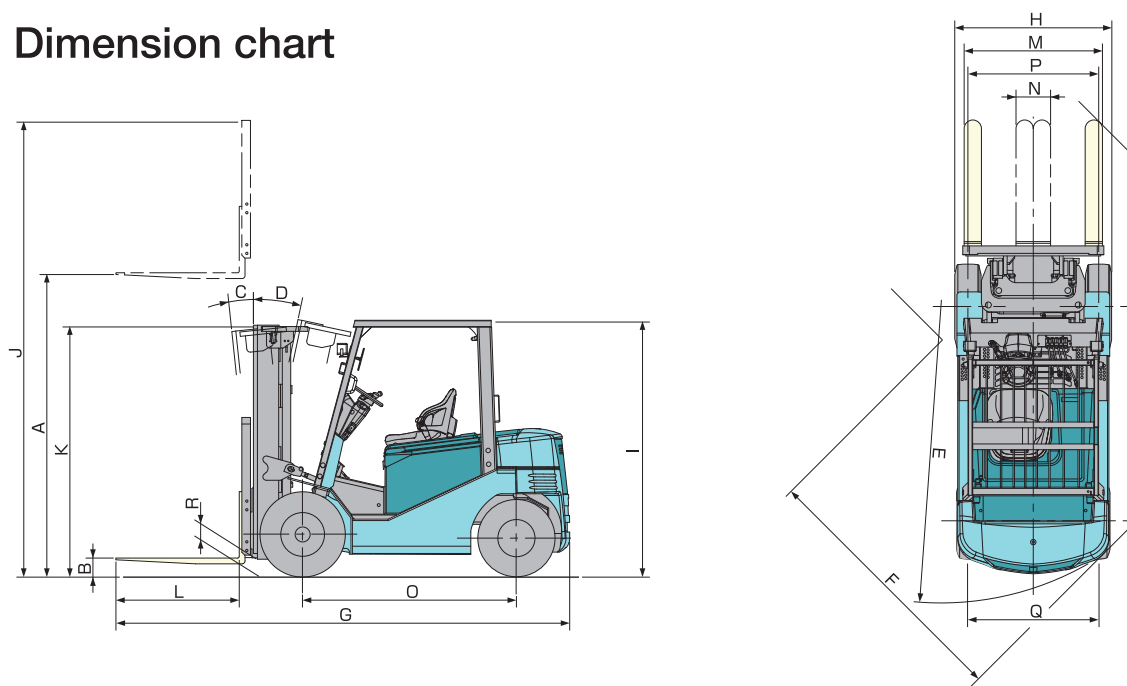


Battery Forklift (Counter Type)

Specifications

Model				8FB35PZX	8FB40PZX
Performance					
Capacity		kg		3,500	4,000
With load center at		mm		600	600
Max. Lifting height	A	mm		3,010	3,010
Standard free lift	B	mm		150	145
Tilt of mast (Forward/backward)	C/D	degree		6/12	6/12
Travel speed	Unladen	km/h		18.0	18.0
(Standard tread)	Laden	km/h		17.0	16.5
Liftingspeed	Unladen	mm/s		480	480
	Laden	mm/s		370	350
Minimum turning radius	E	mm		2,570	2,720
Equal aisle width		mm		2,300	2,370
Dimensions					
Overall length	with forks	G	mm	3,940	4,085
Overall width		H	mm	1,360	1,360
Height	Canopy guard	I	mm	2,215	2,280
	Extended mast	J	mm	4,250	4,250
	Collapsed mast	K	mm	2,170	2,170
Fork length		L	mm	1,070	1,070
Fork spread	Max.-Min.	M/N	mm	1,200-300	1,200-300
Wheelbase		O	mm	1,855	2,000
Tread	Front/Rear	P/Q	mm	1,130/1,140	1,130/1,140
Ground clearance	Mast	R	mm	140	140
Unladen weight	w/ standard battery		kg	5,720	5,950
	w/o battery		kg	4,390	4,410
Tire					
Front wheels				2.50-15-16PR (I)	2.50-15-18PR (I)
Back wheels				7.00-12-12PR (I)	7.00-12-12PR (I)
Electrical Components					
Control type	Drive			FET inverter	FET inverter
	Hoist			FET inverter	FET inverter
	Steering			IGBT chopper	IGBT chopper
Drive motor	Type			AC induction	AC induction
	Rated output	kW		10.3	10.3
Hoist motor	Type			AC induction	AC induction
	Rated output	kW		20.9	20.9
Power steer motor	Type			DC permanent magnet	DC permanent magnet
	Rated output	kW		1.2	1.2
Battery compartment	W × L × H	mm		710 × 1,028 × 780	800 × 1,028 × 780
Battery capacity	Minimum	Volt × Ah/hr		72 × 440/5	72 × 600/5
	Maximum	Volt × Ah/hr		72 × 600/5	72 × 700/5
Dual Tire					
Overall width		mm		1,760	1,760
Tread	Front	mm		1,305	1,305
Unladen weight	w/o battery	kg		4,440	4,460
Tyre size	Front			7.00-15-10PR (I)	7.00-15-10PR (I)

Dimension chart





Forklift

Main Accessories

●: Standard △: Optional

	8FB35PZX	8FB40PZX
Controls		
Auto-power-OFF	●	●
Regenerative braking	●	●
Neutral regeneration (*1)	●	●
Ramp start (*2)	●	●
Neutral start (*3)	●	●
Accelerator pedal adjustment (*4)	●	●
Traction power adjustment (*4)	●	●
Hoist speed limit (*4)	●	●
Tilt speed limit (*4)	●	●
Travel speed limit (*5)	●	●
BDI interrupt (*6)	●	●
Multi-display		
Battery discharge indicator	●	●
Digital clock	●	●
Multi hour meters	●	●
Speedometer	●	●
Safety monitor	●	●
Operation management	●	●
Password entry (*7)	●	●
Lights		
Headlights (*8)	●	●
Turning indicators	●	●
Back buzzer	●	●
Tilting steering wheel		
Suspension seat		
	△	△
Battery Ah/5HR (72V)		
440	●	
600	△	●
700	△	△

- *1 Releasing accelerator during travel activates regenerative braking to slow vehicle speed.
 *2 When starting on a grade, automatic torque adjustment prevents roll-back.
 *3 If the key is switched ON with travel lever engaged or accelerator depressed, vehicle is held stationary and an error message is displayed.
 *4 Acceleration, and power, hoist and tilt speeds can be adjusted to match job requirements.
 *5 Max. speed can be set to conform with workplace speed limit.
 *6 When battery charge falls below 20%, hoist speed is first reduced by 50%, then fork operation stops altogether, to prevent damage to batteries.
 *7 10 different codes can be pre-set.
 *8 With warning buzzer.

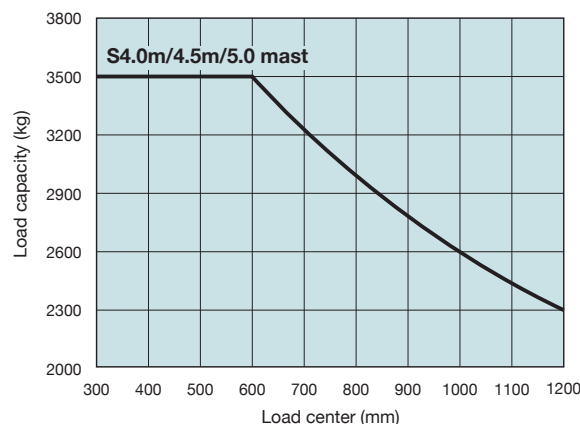
Masts

Max. lifting height	8FB35/40PZX
3000mm	◎ △
3300mm	○
3500mm	○
3700mm	○
4000mm	○ ★
4300mm	○
4500mm	○
4700mm	○
5000mm	○ ★
5300mm	★
5700mm	★
6000mm	★

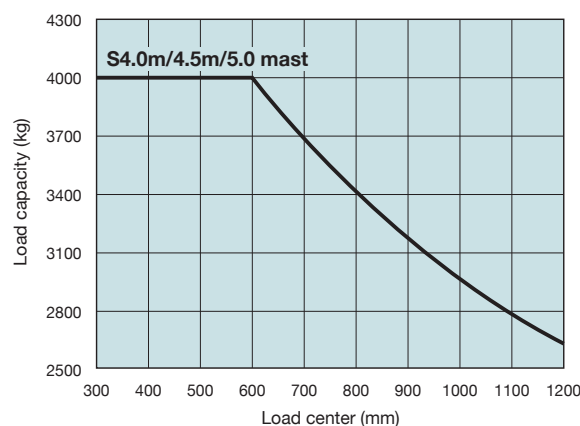
- ◎ Standard mast
 ○ High mast
 ★ 3-stage full-free mast
 △ full-free mast

Load Capacity Charts

8FB35PZX



8FB40PZX



Options

- Long fork
- Extension fork
- High backrest
- Wide carriage
- Double tires
- Pneumatic solid tires
- Colored tires
- Windscreen
- Rear view mirror
- Left-hand shift levers
- Working lights
- Rotating lights
- Forward/reverse chime
- Forward/reverse melody alarm
- Battery top up device
- Spare battery