



Electric Tow Tractors



Electric Tow Tractors

Six models for different towing needs and workplaces

DTP130 • DSP130
DTP200-2A • DSP200-2A
DTP300-2A • DSP300-2A



Towing capacity ranges from 1 ton to 3 tons

Select the optimum class of tow tractor for the trailers and loads you need to transport

Stand-up and sit-down variations

Each capacity class is available in both stand-up and sit-down variations. Select the optimum operator position for the work involved.

DC drive system, AC drive system (2-ton and 3-ton models)

Select the drive system to suit your work and workplace floor surface. DC drive is available as standard, with AC drive as an option.

Range of options to suit particular work types

Options to enhance operator efficiency include mechanisms for opening/closing the towing hook from the driving position, canopies, glass windshields, yellow flashing (rotating) lamps. Select the beset specification for your operating environment



Electric Tow Tractors

KOLEC

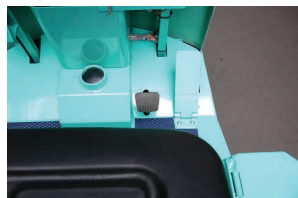
New Tow Tractors Meet Key Requirements For Today's Production Workplace

Designed for operators

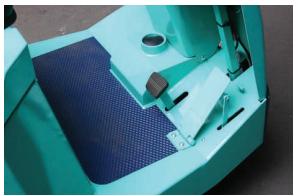
Low floor



Easy access



Reliable operation



Easy-maintenance battery case



2-ton and 3-ton models

Designed for safety

Cushion tire front wheel



Wide chassis to prioritize safety



Overturn protection bars



Specification

Model	Unit	DSP130	DT P130	DSP200-2A	DT P200-2A	DSP300-2A	DT P300-2A
Traction Load	kg	1,300		2,000		3,000	
Driving Method		Sit-down	Stand-up	Sit-down	Stand-up	Sit-down	Stand-up
Travelling Speed (without full load)	km/h	9.5		12.5	12	12.5	12
Travelling Speed (with full load)	km/h	5.5		8.0		8.0	
Climbing Ability (with full load)	%	4.0		4.0		4.0	
Overall Length	mm	1,480	1,580	1,630	1,730	1,630	1,730
Overall Width	mm	900		900		900	
Overall Height	mm	1,190	1,200	1,190	1,190	1,190	1,190
Towing Pin Height	mm	305		305		305	
Wheel Base	mm	900	1,000	1,050	1,150	1,050	1,150
Tread	mm	780		780		780	
Step Height	mm	305	1,200	305	205	305	205
Ground Clearance	mm	90	80	90	80	90	80
Smallest Turning Radius	mm	1,530	1,560	1,730	1,750	1,730	1,750
Weight (incl. Battery)	kg	370	390	485	515	485	515
Wheel (Front)		3.50-5		3.50-5		3.50-5	
Wheel (Rear)		4.80-8(4P)		4.80-8-4PR		4.80-8-4PR	
Brake		Mechanical Brake		Mechanical Brake		Mechanical Brake	
Parking Brake		Main Brakes Interlocking movement		Main Brakes Interlocking movement		Main Brakes Interlocking movement	
Drive Motor		Series Motor		Series Motor		Series Motor	
Drive Motor Output		24V 0.82kw		48V 2.0kw		48V 2.4kw	
Control System		MOSFET Controller		MOSFET Controller		MOSFET Controller	
Battery		24V 120Ah		48V 120Ah		48V 120Ah	
Battery Charger		Automatic Battery Charger (Place)		Automatic Battery Charger (Place)		Automatic Battery Charger (Place)	
Input Voltage		AC220V or AC380V		AC220V or AC380V		AC220V or AC380V	
Battery Charger Capacity	KVA	1.2		1.6		1.6	

*Travelling speed and climbing ability are time of a simple substance of a Tow Tractor.

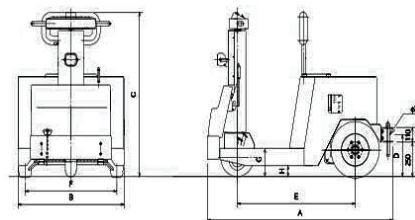
New Efficient Way

Tow Tractors are today's solution for reducing logistics and material handling costs. Instead of moving one pallet at a time, a single operator with a tow tractor can transport a while batch of pallets, producing dramatic cuts in labor costs. All Kolec Tow Tractors are battery powered, cutting CO₂ emissions.

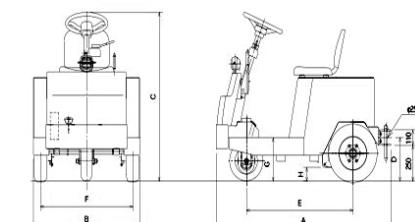
- Contents of this catalogue are things as of April, 2007, and there can be a thing changing specifications and the equipment without a notice for improvement.
- A color of a car printed by this catalogue can be a little different from a real car by circumstances of print.

Dimention

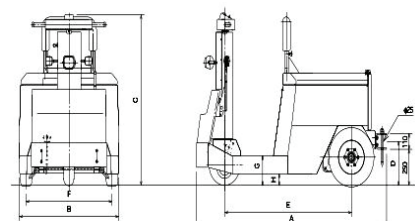
DTP130



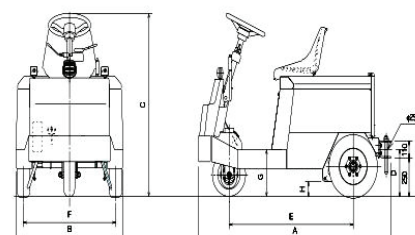
DSP130



DTP200-2A/DTP300-2A



DSP200-2A/DSP300-2A





Electric Tow Tractors



DTPM Series

Model

DTPM
200/500

- Economical, eco-friendly and ergonomically designed.
- Towing of trailers to pick, move and transfer operations in industries.
- Ideal for cargo tugging in airport, in-plant and warehouses.
- Sleek, sturdy and stable for better maneuvering in narrow aisles.
- Highly efficient for gradient operations.



Compact design for smart move



Advanced de-latching system



Easy maintenance battery case



Quick battery replacement system



Tail lamps, indicators & towing hitch

Model

DSPM
200/500

- Economical, eco-friendly and ergonomically designed.
- Towing of trailers to pick, move and transfer operations in industries.
- Ideal for cargo tugging in airport, in-plant and warehouses.
- Sleek, sturdy and stable for better maneuvering in narrow aisles.
- Highly efficient for gradient operations.



Accelerator & brake pedal



Easy maintenance battery case



Quick battery replacement system



Advanced de-latching system



Tail lamps, indicators & towing hitch

Trailer for tow tractors



Custom-Made Products



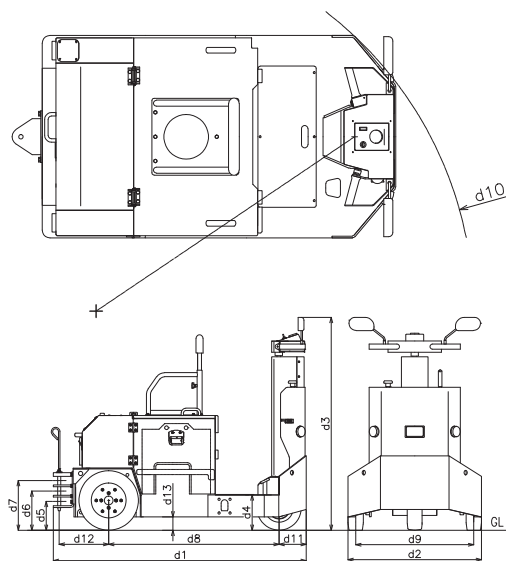
Electric Tow Tractors



DTPM-200 / DTPM-500

STANDARD FEATURES

- Battery discharge Indicator with hour meter
- Rear view mirrors
- Safety horn
- front head lamp, Tail lamp and side indicators
- Manual de-latching system (3 levels)
- Lead acid traction battery
- Solid rubber tyres
- Emergency power cutoff knob with Ignition switch
- External battery charging socket



OPTIONAL FEATURES

- Beacon light with pillar assembly
- Indicators safety guard
- Advanced de-latching system
- Reverse inching switch
- Reverse horn
- Continuous soft music
- Safety foot switch
- Battery safety switch
- Speed selector switch
- Front rubber bump
- Rear pneumatic tyres
- Battery changing trolley
- Seat belt
- Top canopy

TECHNICAL SPECIFICATIONS:

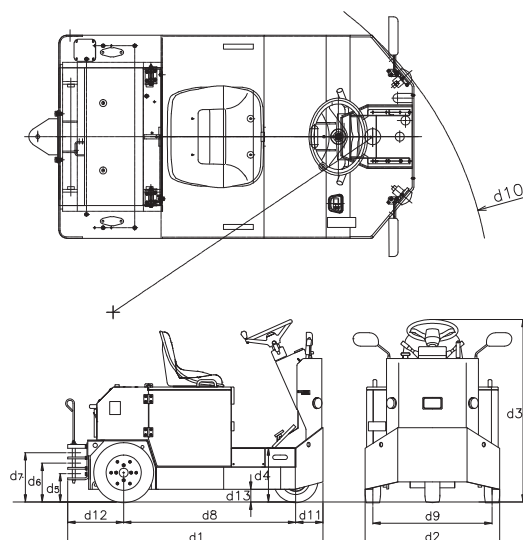
Model Type		DTPM-200	DTPM-500
Traction Load		2000	5000
Driving Method		Sit-down	Sit-down
Drive Motor		AC	AC
Lifting Speed	Laden	Km/Hr 5.5	8
	Unladen	Km/Hr 10	12
Turning Radius		mm 1680	1680
Overall Length (A)		mm 1710	1710
Overall Width (B)		mm 900	900
Overall Height (C)		mm 1220	1220
Towing Pin Height (D)		mm 190/260/330	190/260/330
Wheelbase (E)		mm 1150	1150
Tread (F)		mm 760	800
Step Height (G)		mm 365	365
Ground Clearance (H)		mm 85	85
Service Weight		Kg 900	950
Control System		Transistor Inverter (Curtis)	
Brakes		Mechanical	Hydraulic
Handbrake		Magnetic	Magnetic
Battery		V/AH 48V 240 AH	
Battery Charger		Stationary type automatic battery charger	
Battery charger capacity		KVA 1.2	
Wheels	Front	Front : 3.50-5	
	Rear	Rear : 4.00-8	
Wheels Front		Solid rubber	
Battery discharge indicator with hour meter		Yes	
Rear view mirrors		Yes	
Safety horn		Yes	

Product & Accessories shown here may not be the part of standard equipment

DSPM-200 / DSPM-500

STANDARD FEATURES

- Battery discharge Indicator with hour meter
- Rear view mirrors
- Safety horn
- Front head lamp, Tail lamp and side indicators
- Adjustable padded pipe backrest
- Manual de-latching system (3 levels)
- Lever accelerator with thumb pressure
- Lead acid traction battery
- Solid rubber tyres
- Emergency power cutoff knob with Ignition switch
- External battery charging socket



OPTIONAL FEATURES

- Beacon light with pillar assembly
- Additional head lamp
- Indicators safety guard
- Advanced de-latching system
- Reverse inching switch
- Reverse horn
- Continuous soft music
- Safety foot switch
- Battery safety switch
- Speed selector switch
- Cushioned back rest
- Front rubber bump
- Rear pneumatic tyres
- Battery changing trolley
- Maintenance free VRLA battery

TECHNICAL SPECIFICATIONS:

Model Type		DSPM-200	DSPM-500
Traction Load		2000	5000
Driving Method		Stand-up	Stand-up
Drive Motor		AC	AC
Lifting Speed	Laden	Km/Hr 5.5	8
	Unladen	Km/Hr 11	12
Turning Radius		mm 1680	1680
Overall Length (A)		mm 1710	1710
Overall Width (B)		mm 900	900
Overall Height (C)		mm 1435	1435
Towing Pin Height (D)		mm 190/260/330	190/260/330
Wheelbase (E)		mm 1150	1150
Tread (F)		mm 800	800
Step Height (G)		mm 235	235
Ground Clearance (H)		mm 85	85
Service Weight		Kg 900	950
Control System		Transistor Inverter (Curtis)	
Brakes		Mechanical	Hydraulic
Handbrake		Magnetic	Magnetic
Battery		V/AH 48V 240 AH	
Battery Charger		Stationary type automatic battery charger	
Battery charger capacity		KVA 1.2	
Wheels	Front	Front : 3.50-5	
	Rear	Rear : 4.00-8	
Wheels Front		Solid rubber	

Product & Accessories shown here may not be the part of standard equipment